

THE LEGI-FIT FENCE SYSTEM USES THE LEGI MESH PANEL, ALONG WITH THE REVOLUTIONARY FIT POST. WITH ITS SINGLE TOP BOLT CONNECTION, FIT FENCE ADDS EVEN MORE OPTIONS TO THE LEGI LINEUP. OFFERING SAFETY, INTEGRATION OF THE FENCE AND LANDSCAPE AND THE COST SAVINGS OF A QUICK INSTALLATION. HOT-DIP GALVANIZED AFTER FABRICATION, COATED WITH UV- STABLE, THERMALLY-SET POLY-ESTER POWDER COAT, LEGI LEADS THE INDUSTRY IN CORROSION PROTECTION.

INSTALLATION

EASY AS

1



HANGING THE MESH PANELS ONTO THE HOOKS OF THE LEGI-FIT POST.

2



HANGING THE CLAMPING TUBE ONTO THE HOOKS OF THE LEGI-FIT POST.

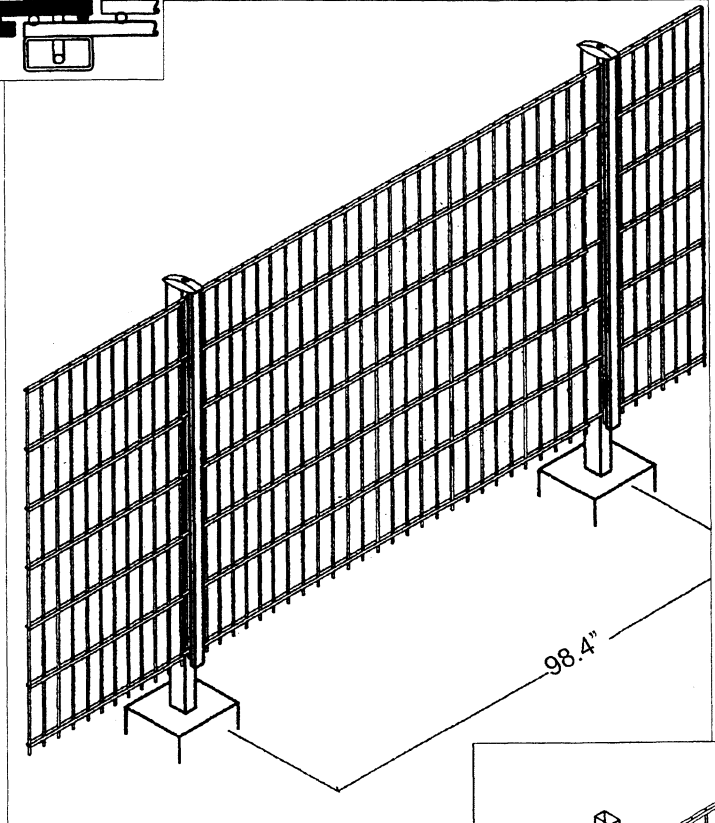
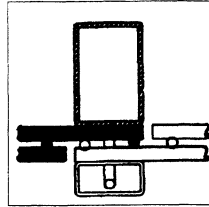
3



INSERTING AND TIGHTENING THE POST CAP.

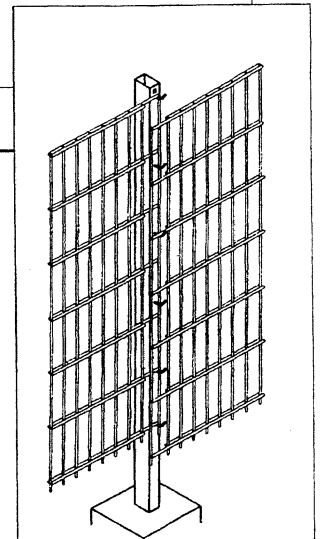
LEGI-FIT POST PLAN VIEW

Post, clamping tube and two overlapping mesh panels.



STEPPING AT 2" INCREMENTS

Up to 8" stepping with no extra tools or hardware.



The FIT post is 60mm x 40mm [2.36" x 1.6"] tubular steel; clamping tube is 20mm x 40mm [.79" x 1.6"]. The LEGI mesh is constructed of 6mm [.24"] vertical wire and 8mm [.31"] double horizontal rods, welded crosswise, with standard 50mm [1.9"] x 200mm [7.9"] openings-others sizes available. Heights are 630mm [24.8"] to 2230mm [88"], in 8" increments. All parts are hot-dip galvanized after fabrication. Matching gates are also available.



OuterSpace Landscape
Furnishings
7533 Draper Ave
La Jolla CA 92037

Phone: 800/338-2499 Fax: 858/459-3622
Email: legi@fences.com Web: www.fences.com